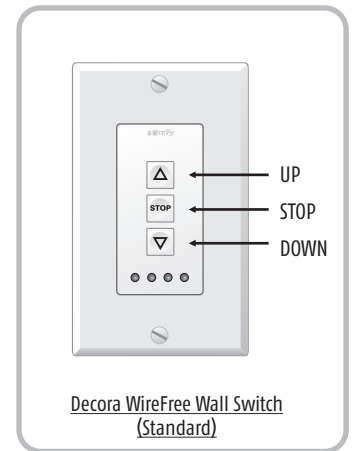
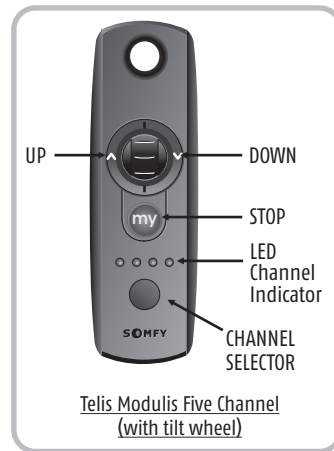
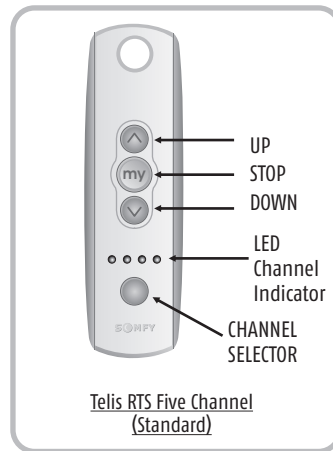
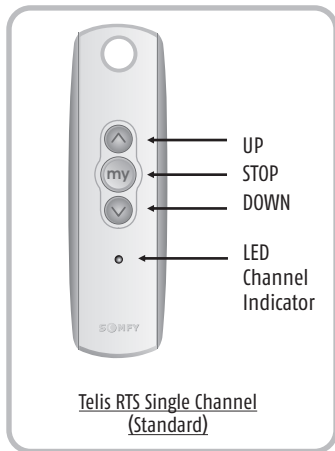


Visual Reference Guide for Sunburst Shutter Motor



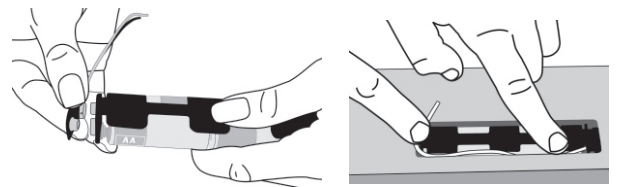
Whether a single or multi-channel remote is to be programmed, the sequence is identical until step 5 where the appropriate channel or transmitter must be identified.



PROGRAMMING THE SUNBURST SHUTTER MOTOR WHEN TURNING THE POWER ON FOR THE FIRST TIME.

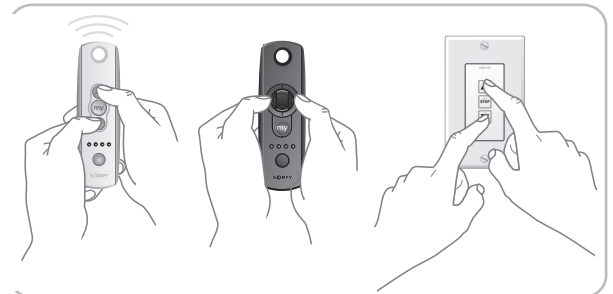
STEP 1

Connect power to the shutter motor by removing the motor panel cover and attaching the battery cable to the pack. Re-insert battery pack into battery slot of shutter and route the antenna cable along side of the pack (be certain to keep antenna cable away from the battery cable). Re-attach motor panel cover. The shutter is now ready for programming.



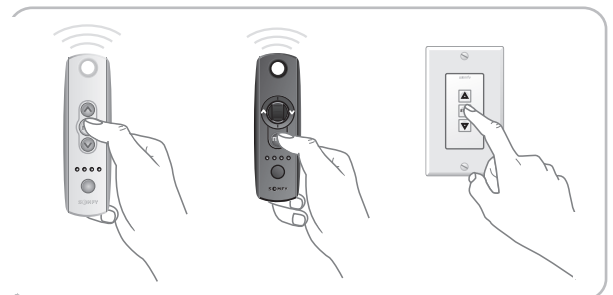
STEP 2

To initiate programming press and hold both the ▲ (Up) and ▼ (Down) buttons at the same time until the shutter louvers jog.



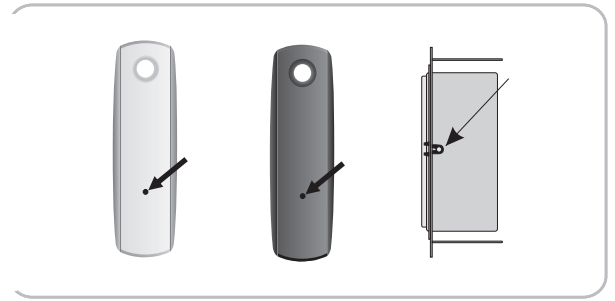
STEP 3

Press and hold the ▼ (DOWN) button and confirm the shutter louvers move in a down direction. Press and hold the ▲ (UP) button and confirm the shutter louvers move in an up direction. If shutter louver direction is correct, continue to Step 4. If shutter louver direction is not correct (in reverse), press and hold the ● (my) MY (Stop) button on the transmitter for 2 seconds. Shutter louvers will jog. Shutter louver direction is now corrected. Shutter louver movement should now correspond to the direction button on the transmitter.



STEP 4

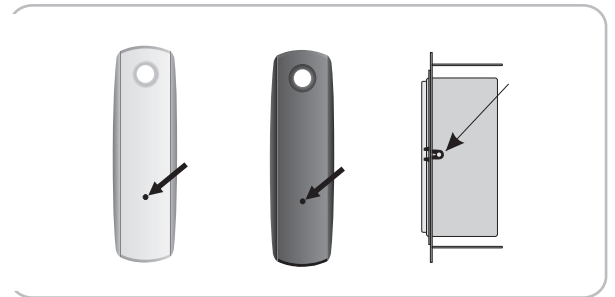
Press and hold the Program button on the back of the transmitter until the shutter louvers jog. Shutter is now programmed.



OPTIONS

ADDING A REMOTE/CHANNEL

First press the programming button on the back of the already programmed remote until the shutter louvers jog. Then press the programming button on the new remote or channel that you would like to add until the shutter louvers jog. Confirm the new remote or channel operates the shutter louvers.



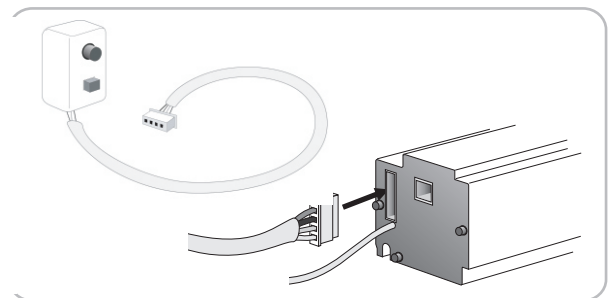
Deleting Specific Channels/Transmitters

Press and hold the PROGRAM button on the previously addressed transmitter until the shutter louvers jog. Select the desired channel (1-4 or all) or transmitter (single channel) to be deleted. Press and hold the PROGRAM button on the transmitter until the shutter louvers jog. Channel or transmitter is now deleted from shutter memory and will not operate shutter.

Resetting Motor

(Erasing all Previously Programmed Limit Settings and Channels)

- 1) Loosen and remove the motor cover panel.
- 2) Insert reset tool into connector on motor.
- 3) **To delete all the transmitters**, press and hold the program button located on the reset tool for 7 seconds. Release the programming button after the LED starts flashing. The motor jogs one time. The transmitters are deleted but the limits remain in memory.
- 4) **To delete all previous settings**, press and hold the PROGRAM button located on the RESET TOOL (approximately 12 seconds) until LED blinks rapidly and extinguishes. (Motor is now reset to factory mode.) Motor limits will need to be reset.
- 5) Re-attach motor panel cover.



USER MODE: Operating the Shutter

Telis & Decora Switch Only

1. Press and hold the (UP) ▲ button to open the shutter louvers. Release the button when the desired position is reached.

Modulis Only

Press momentarily on the (UP) ▲ button to open the Shutter louvers. Press the (UP) ▲ button again to stop the movement of louvers.

Telis & Decora Switch Only

2. Press and hold the (DOWN) ▼ button to partially close the shutter louvers. Release the button when the desired position is reached.

Modulis Only

Press momentarily on the (DOWN) ▼ button to partially close the Shutter louvers. Press the (DOWN) ▼ button again to stop the movement of louvers

Telis, Modulis & Decora Switch

3. Press momentarily on the (my) MY (stop) button to completely close the shutter louvers. The shutter louvers start moving and stop when the closed position is reached.

Modulis Transmitters

4. Scroll the wheel of the Modulis transmitter to move the shutter louvers up or down. The shutter louvers will move in relation to the motion of the wheel on the transmitter.

Telis Modulis Decora

